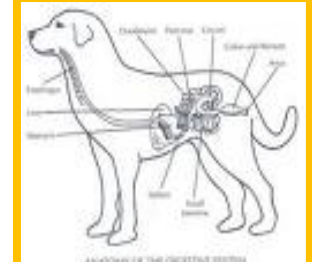


THE EFFECT OF A NOVEL COMPLEMENTARY FEEDSTUFF ON CANINE FAECAL CONSISTENCY AND ODOUR

Catherine Carmichael



Methods and Materials

- 21 dogs
- 2.5 – 40kg
- Cross-over design
- Questionnaire

Canine Parameters

Table 1 Treatment effects on owner perception of canine parameters

Parameter	Pre treatment (control)	Treatment (Feedstuff)	Post treatment (control)	<i>P</i>
Breath odour	3.7	2.1	3.5	<.001
Faecal odour	4.1	2.2	3.8	<.001
Faecal consistency	4.1	3.1	3.7	<.001
Faecal pick up	3.3	2.1	2.6	<.001

Faecal consistency

Pre treatment
(control)



Treatment
(Feedstuff)



Post treatment
(control)



Microbiological

Table 2 Effect of treatment on faecal bacterial concentration

Parameter (log cfu/g)	Treatment (Feedstuff)	Control	<i>P</i>
TVC	7.68	7.64	0.418
Entero	6.31	6.63	0.075
Lactics	7.36	7.58	0.345
Cl_perf	7.45	7.42	0.874
Total anaerobes	8.27	8.35	0.838

Conclusions

- Breath odour
- Faecal odour
- Faecal consistency
- Faecal pick up
- Enterobacteriaceae